

## Wall Units and Armoires

<u>Item</u>	<u>Page #</u>
Item # 114 Old Point Armoire .....	2
Item # W155 Broad River Wall Unit .....	2
Item # W131 Classic Bookcase Wall Unit .....	3
Item # W132 Three Piece Cottage Wall Unit .....	4
Item # W140 Lowcountry Wall Unit .....	5
Item # W145 High Tide Wall Unit .....	6
Item # W150 Brunswick Wall Unit .....	7
Item # W160 Sea Island Wall Unit .....	8
Item # W165 Maybank Wall Unit .....	9



[www.seabrookclassics.com](http://www.seabrookclassics.com)

[www.coastalwoodcraft.com](http://www.coastalwoodcraft.com)

Phone: 843.466.0241 Fax: 843.466.0288

By **Coastal**  **Woodcraft**



**Item # 114**  
**Old Point Armoire**

- Two Piece Wall Unit
- Four Doors upper unit
- Large Center Compartment with Two Small Side
- Three Adjustable Shelves in each Small Side
- BASE:: Six Drawers
- 89H x 79W x 28D @ Crown
- Center Compartment: 44H x 40W x 25D

**PHOTO**

- Plantation Shutter Doors
- Brick Red over Antique White with Medium Rub

*All Door Styles available, see Options.*



**Item # W155**  
**Broad River Wall Unit**

- Four Piece Wall Unit
- CENTER: Two Piece Center Unit
- Top: Doors
- Base: Three Drawers
- SIDES: Stepback
- Top: Three Adjustable Shelves
- Base: Three Drawers
- 96H x 84.5W x 24.75D @ Crown

**PHOTO**

- Bermuda Shutter Doors
- Victorian White exterior
- Gumbo Beadboard Backing

*All Door Styles available, see Options.*



[www.seabrookclassics.com](http://www.seabrookclassics.com)  
[www.coastalwoodcraft.com](http://www.coastalwoodcraft.com)

Phone: 843.466.0241 Fax: 843.466.0288

By **Coastal**  **Woodcraft**

Item # W131  
Classic Bookcase Wall Unit

- Three Piece Wall Unit

**CENTER**

- Top: Open
- Base: Doors

**SIDES**

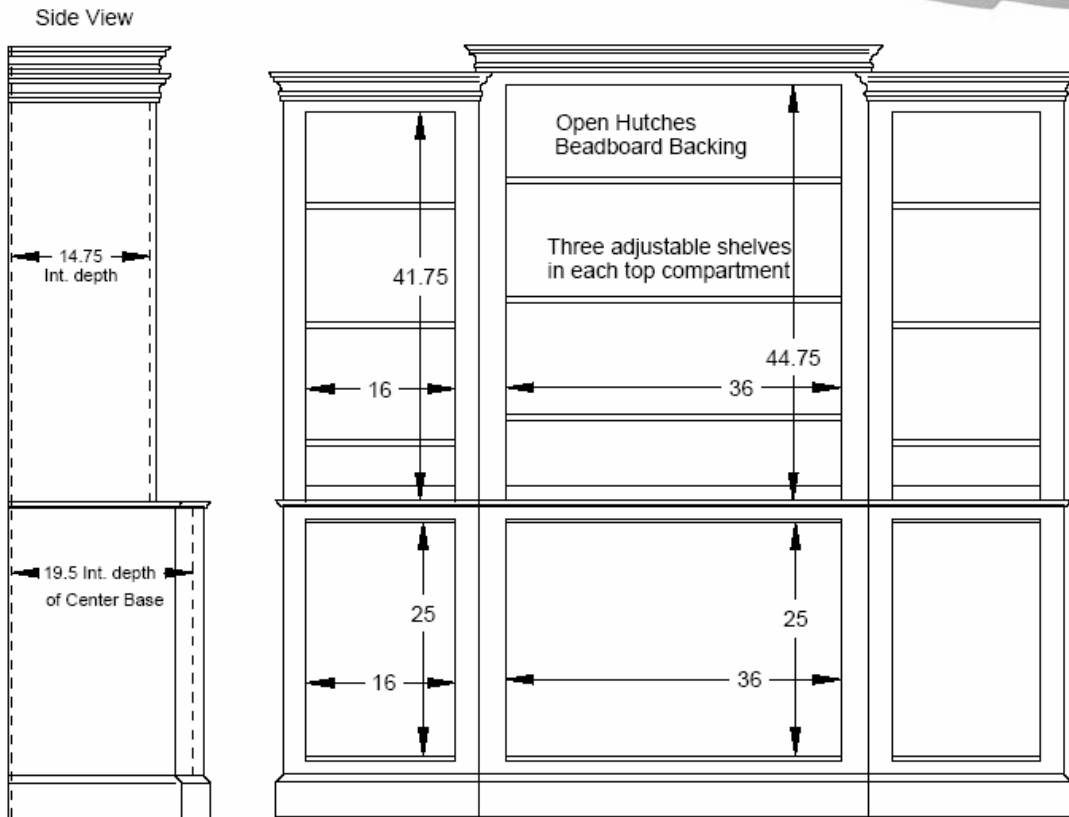
- Top: Open
- Three Adjustable Shelves each Side Unit
- Base: Doors
- Wrap around Crown
- Beadboard Backing
- 83H x 87W x 21.75D @ Crown
- Interior: See line drawing below

**PHOTO**

- Victorian White
- Plantation Shutter Doors



*All Door Styles available, see Options.*



[www.seabrookclassics.com](http://www.seabrookclassics.com)  
[www.coastalwoodcraft.com](http://www.coastalwoodcraft.com)

Phone: 843.466.0241 Fax: 843.466.0288

By Coastal Woodcraft

Item # W132  
Three Piece Cottage Wall Unit

**CENTER**

- Top: Doors
- Base: Doors

**SIDES**

- Top: Open
- Three Adjustable Shelves
- Base: Doors
- Crown Molding
- Beadboard Backing
- 96H x 12.5W x 25D @ Crown
- Interior: See line drawing below

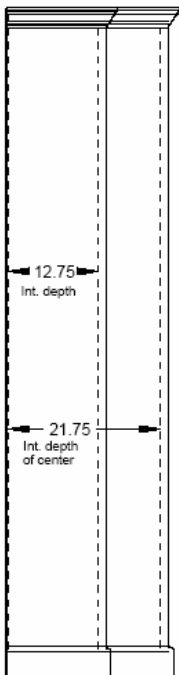
**PHOTO**

- Antique White
- Bermuda Shutter Doors
- Raised Panel Doors

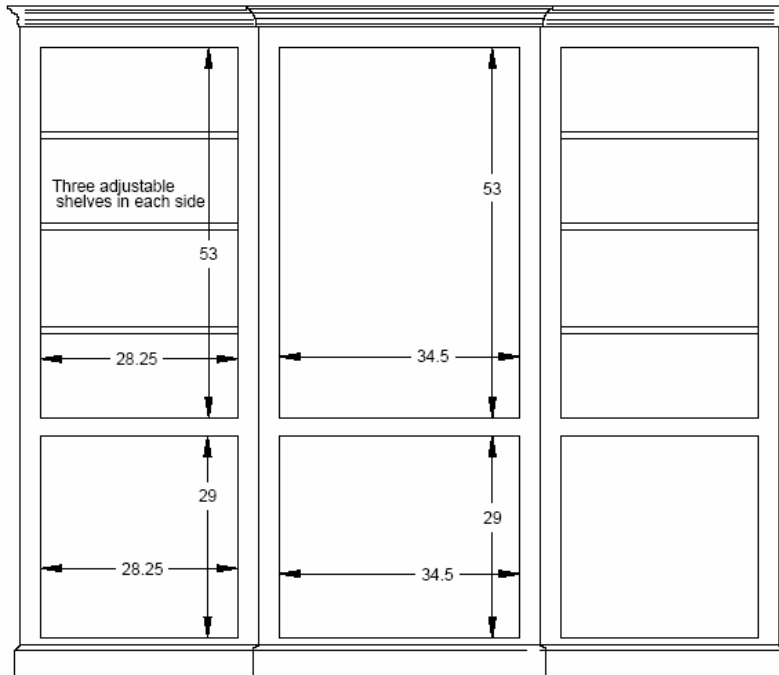
*All Door Styles available,  
see Options.*



Side View



Interior View



[www.seabrookclassics.com](http://www.seabrookclassics.com)  
[www.coastalwoodcraft.com](http://www.coastalwoodcraft.com)

Phone: 843.466.0241 Fax: 843.466.0288

By Coastal Woodcraft

**Item # W140**

**Lowcountry Wall Unit**

- Four Piece Wall Unit

**CENTER: Two Piece**

- Top: Doors
- Base: Doors

**SIDES**

- Top: Open
- Three Adjustable Shelves
- Base: Doors
- Beadboard Backing
- 80H x 102.5W x 25.5D@ Crown

**Interior:**

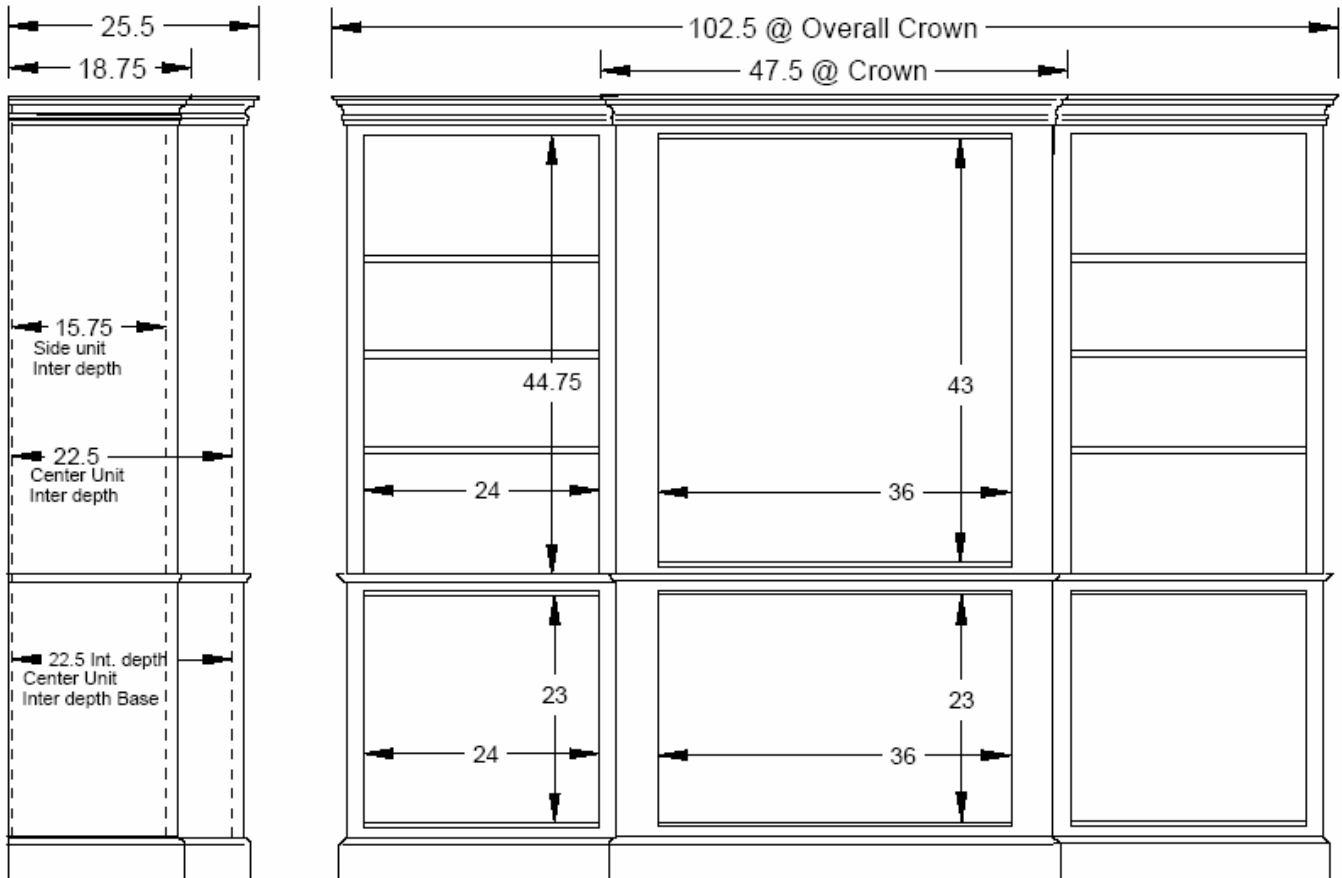
See line drawing below

**PHOTO**

- Seabrook Black
- Plantation Shutter Doors



*All Door Styles available.*



[www.seabrookclassics.com](http://www.seabrookclassics.com)

[www.coastalwoodcraft.com](http://www.coastalwoodcraft.com)

Phone: 843.466.0241 Fax: 843.466.0288

By **Coastal**  **Woodcraft**





Item # W145  
High Tide Wall Unit

*Accommodates Wide Screen Televisions*

- Three Piece Wall Unit

#### CENTER

- Bi-Fold Doors



#### SIDES

- Open Hutch
- 2 Adjustable Shelves
- One Door
- Fixed Interior Split Shelf @ Top for DVD, VCR, etc
- 5.75H x 23.5 W x 20.5D
- 75H x 105.5W x 23.5D @ Crown
- Interior Center Compartment: 64H x 48W x 20.5D
- Interior Center below Split Shelf: 57H

#### PHOTO

- Victorian White with Veranda Green Bead-board Back
- Plantation Shutter Doors

*All Door Styles available, see Options*



[www.seabrookclassics.com](http://www.seabrookclassics.com)

[www.coastalwoodcraft.com](http://www.coastalwoodcraft.com)

Phone: 843.466.0241 Fax: 843.466.0288

By Coastal Woodcraft

**Item # W150**

**Brunswick Wall Unit**

- Four Piece Wall Unit

**CENTER:** Two Pieces

- Top: Two Bi-Fold Doors
- Base: Four Doors

**SIDES**

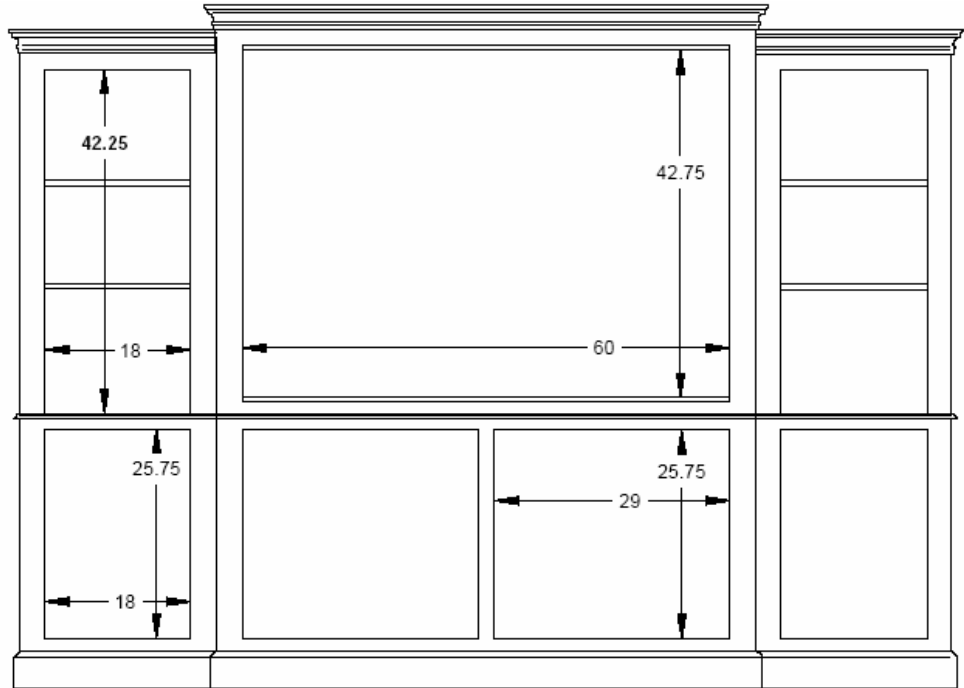
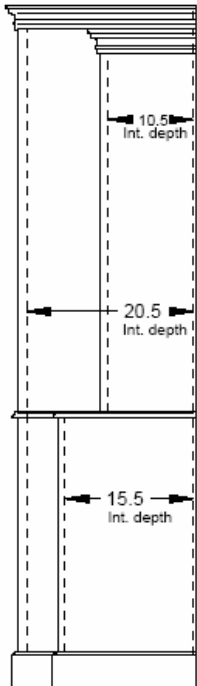
- Top: Two Adjustable Shelves
- Base: One Door each Side
- 84H x 17.5W x 23.5D @ Crown
- Interior: See line drawing below

**PHOTO**

- Victorian White
- Bermuda Shutter Doors



*All Door Styles available,  
see Options*



[www.seabrookclassics.com](http://www.seabrookclassics.com)  
[www.coastalwoodcraft.com](http://www.coastalwoodcraft.com)

Phone: 843.466.0241 Fax: 843.466.0288

By Coastal Woodcraft

Item # W160  
Sea Island Wall Unit

- Four Piece Wall Unit

**CENTER:**

- Two Piece Center Unit
- Top: Doors
- Base: Doors

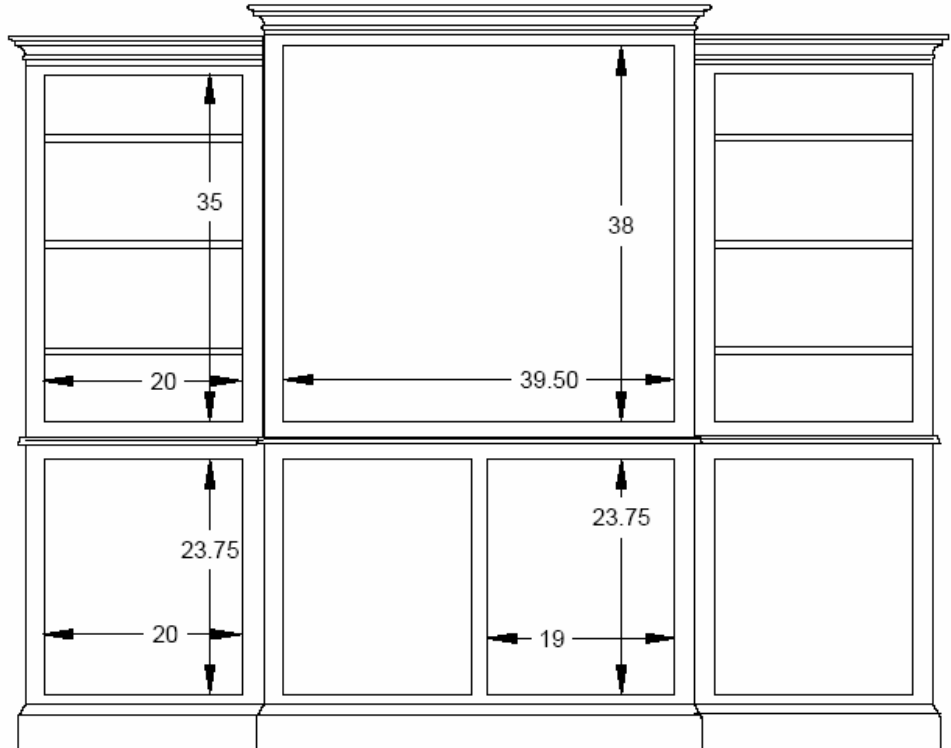
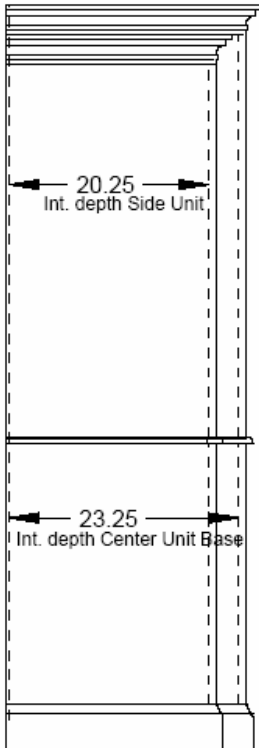
**SIDES:**

- Top: Open
- Three Adjustable Shelves
- Base: Door
- Beadboard Backing
- 75H x 94.5W x 25.75D @ Crown
- Interior: See line drawing below

**PHOTO**

- Seabrook Black over Natural
- Raised Panel Doors

*All Door Styles available, see Options*



[www.seabrookclassics.com](http://www.seabrookclassics.com)  
[www.coastalwoodcraft.com](http://www.coastalwoodcraft.com)

Phone: 843.466.0241 Fax: 843.466.0288

By Coastal Woodcraft





Item # W165  
Maybank Wall Unit

**PHOTO**

- Victorian White over Brown
- Shown with Basket Weave Doors



Item # W165  
Maybank Wall Unit

*Accommodates many Wide Screen Televisions*

- 2 Piece Wall Unit
- Hutch has Bi-Fold Doors
- Opened Center is 37.5H x 48W x 13D above Fixed Shelf and Cubicles
- 73H x 7W x 16.5D @ Hutch Crown (78.5D x 20.25D @ Base Top)

***Other Door Options available***



[www.seabrookclassics.com](http://www.seabrookclassics.com)  
[www.coastalwoodcraft.com](http://www.coastalwoodcraft.com)

Phone: 843.466.0241 Fax: 843.466.0288

By **Coastal Woodcraft**

Visit us at [www.seabrookclassics.com](http://www.seabrookclassics.com)



by Coastal  Woodcraft

Orders or Inquiries  
843.466.0241

Fax  
843.466.0288

Email  
[Info@seabrookclassics.com](mailto:Info@seabrookclassics.com)



[www.seabrookclassics.com](http://www.seabrookclassics.com)  
[www.coastalwoodcraft.com](http://www.coastalwoodcraft.com)

Phone: 843.466.0241 Fax: 843.466.0288

By Coastal  Woodcraft